

FEATURES

- ☑ Single smooth fiberglass front entry door with glass insert
- ☑ Decorative brackets
- ☑ Pre-Cast concrete front entry step with aluminum railing per plan
- ☑ 9' ceiling on main floor includes transom windows where applicable
- ☑ Walk-through mudroom/pantry
- ☑ French Pantry door with 1/2" Narrow Reed Glass
- ☑ Cantilevered Fireplace, includes WestView mantel c/w full height box out to ceiling
- ☑ Railing on stairwell to upper floor
- ☑ Main floor laundry room
- ☑ Tile included in bathrooms, laundry room and mudroom
- ☑ Hardwood included in kitchen, nook, foyer and hallway
- ☑ Includes finished garage: drywalled, insulated and fire taped
- ☑ 5pc Ensuite includes 4' shower with pot light, 66x36" soaker tub and double sinks
- ☑ Large Bonus room
- ☑ Open to below area
- ☑ Beam ceiling in open to below above great room
- ☑ Basement includes 3pc rough-in plumbing
- ☑ 75 U.S. gallon electric hot water heater
- ☑ 2 high efficiency furnaces (93%) zoned with programmable thermostat



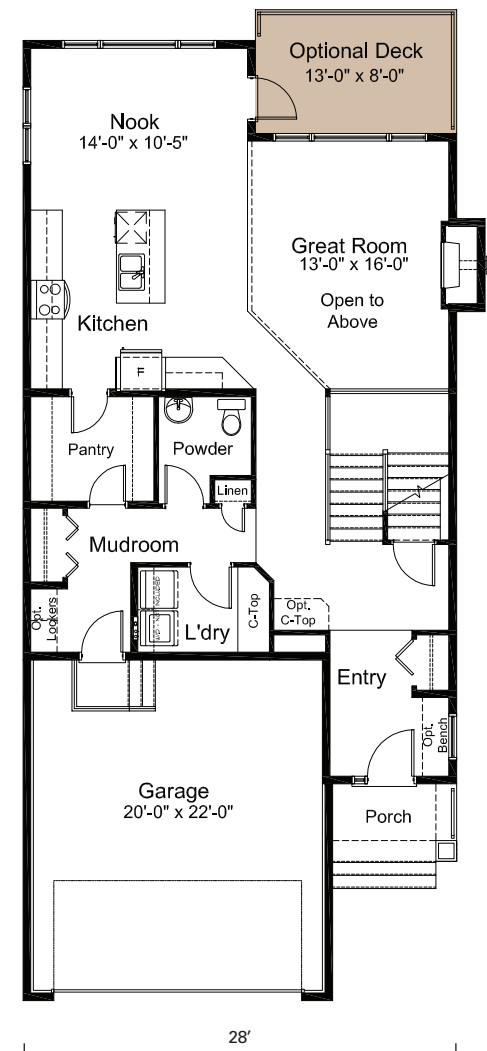
(Craftsman Elevation)



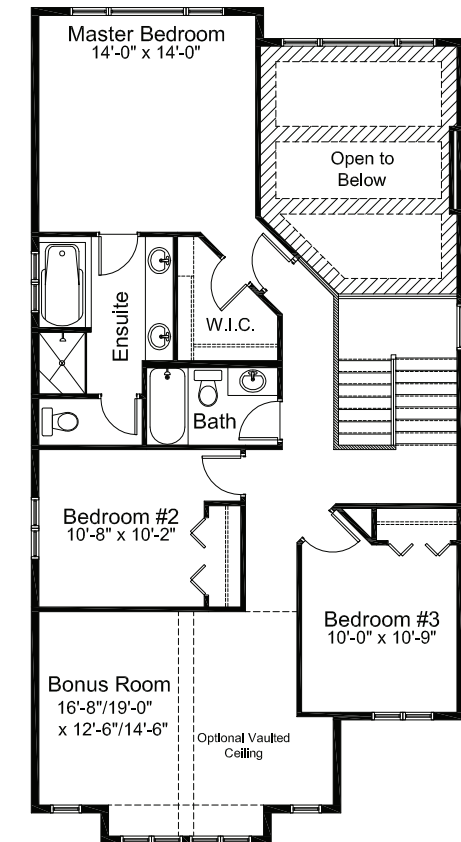
THE
GEORGIA
2,310 sq.ft.

NOTES

Main Floor
1,111 sq.ft.



Upper Floor
1,199 sq.ft.



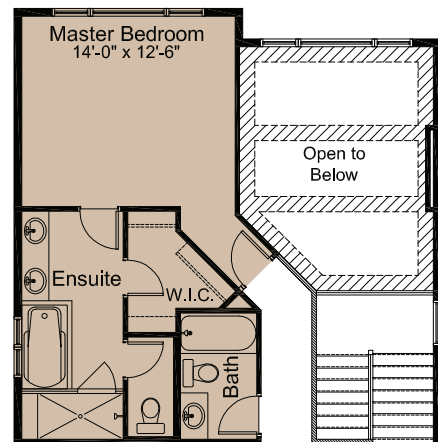
The illustration shown on this brochure is a rendering only and does not represent the final look of your home. Elevations are also subject to approval from Architectural Controls. WestView Builders retains the rights to alter plans, features and specifications without notice. Standard floor plan does not include basement development, deck or options in the base price. Room sizes are approximate.

The illustration shown on this brochure is a rendering only and does not represent the final look of your home. Elevations are also subject to approval from Architectural Controls. WestView Builders retains the rights to alter plans, features and specifications without notice. Standard floor plan does not include basement development, deck or options in the base price. Room sizes are approximate.

ELEVATION STYLE



Craftsman
Elevation



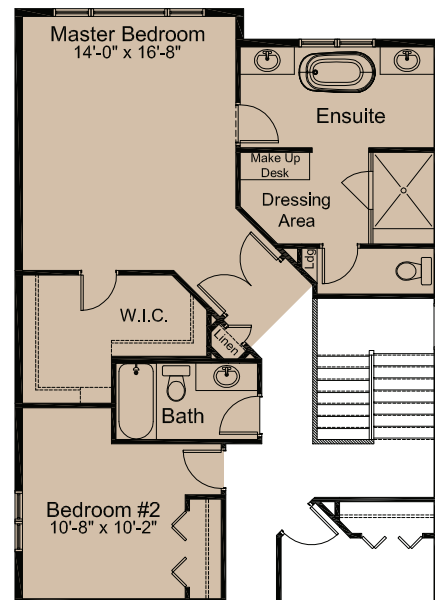
Ensuite Option #1
(Spa)



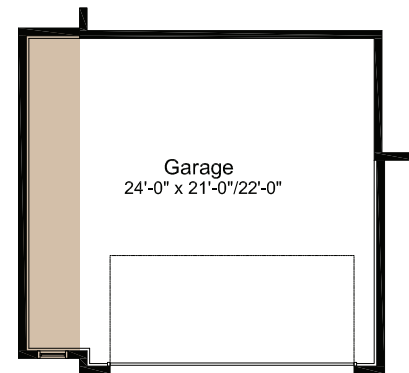
4 Bedroom Option (Adds
205 Sq.Ft. to Upper)



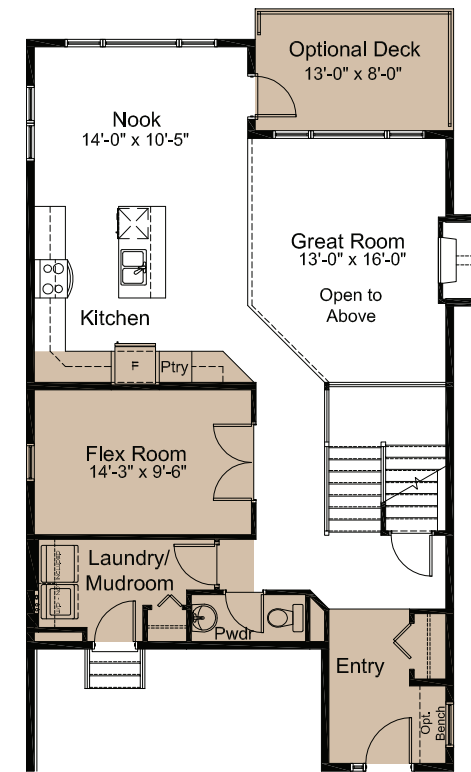
Laundry & Sitting Area Option (Adds 205
Sq.Ft. to Upper.) Must be combined with
main floor mudroom & desk area option



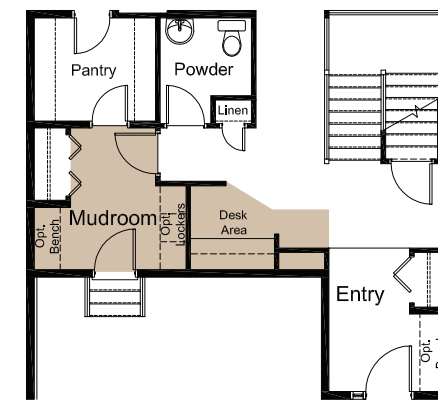
Ensuite Option #2 (Spa)
Adds 205 Sq. Ft. to Upper



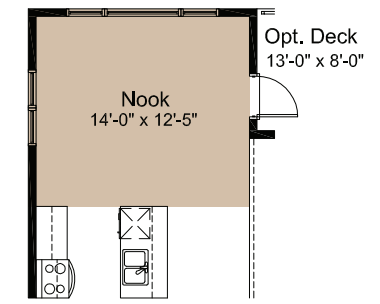
4' Garage Width Extension
Option c/w Window



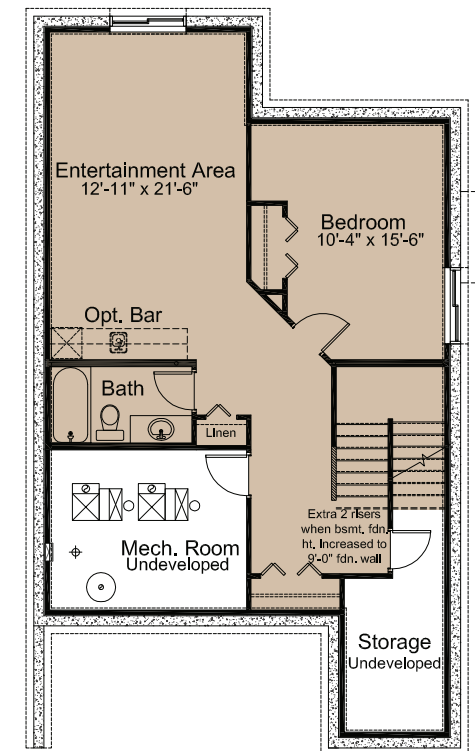
Flex Room &
Laundry/Mudroom
Location Option



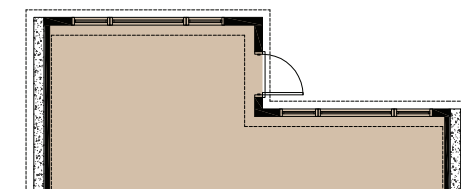
Mudroom & Desk Area
Option. Must be
combined with upper
floor laundry option



Nook Extension w/
Foundation Option
(Adds 30 Sq. Ft.)



Basement Development
Option = 708 Sq. Ft. of
Developed Area



Walkout Basement Option.
Undeveloped, as lot
grades will allow

The illustration shown on this brochure is a rendering only and does not represent the final look of your home. Elevations are also subject to approval from Architectural Controls. WestView Builders retains the rights to alter plans, features and specifications without notice. Standard floor plan does not include basement development, deck or options in the base price. Room sizes are approximate.

The illustration shown on this brochure is a rendering only and does not represent the final look of your home. Elevations are also subject to approval from Architectural Controls. WestView Builders retains the rights to alter plans, features and specifications without notice. Standard floor plan does not include basement development, deck or options in the base price. Room sizes are approximate.