

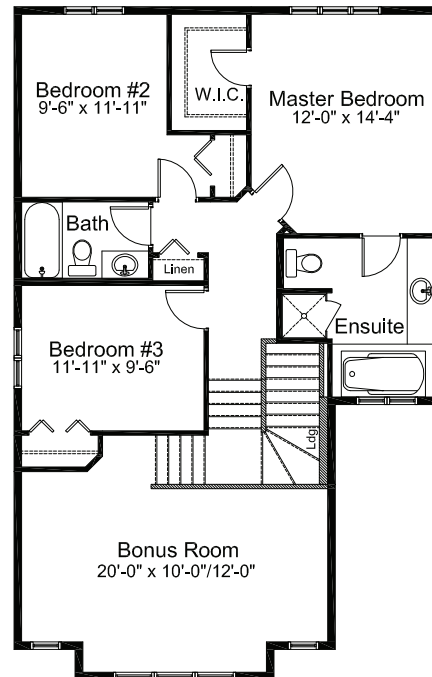
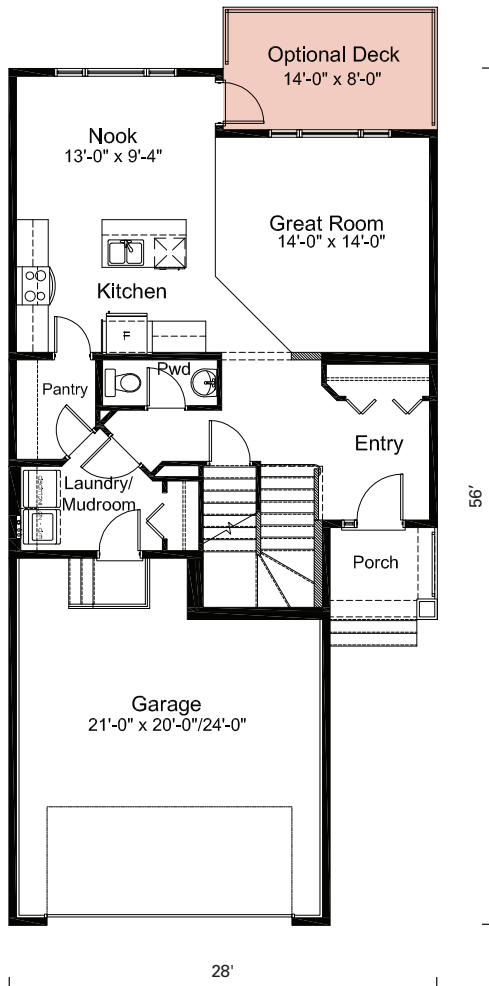


(Craftsman Elevation)

THE
LE ROUX
1,952 SQ. FT.

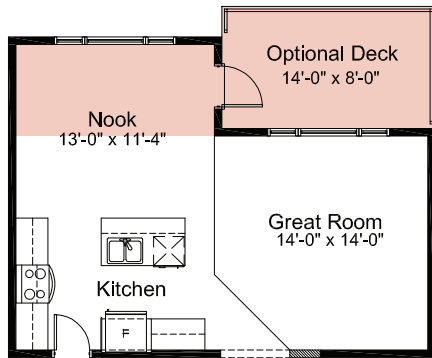
Main Floor
863 sq. ft.

Upper Floor
1,089sq. ft.

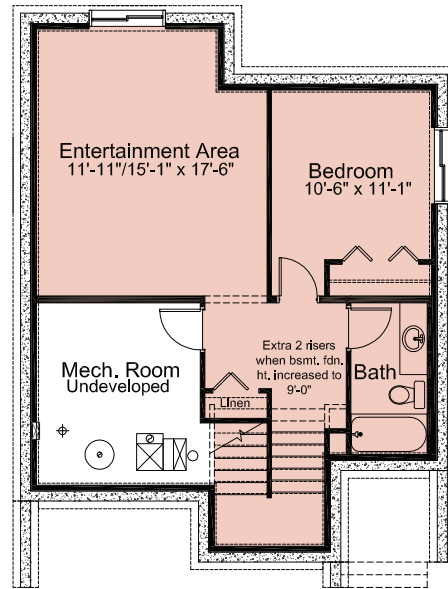


The illustration shown on this brochure is a rendering only and does not represent the final look of your home. Elevations are also subject to approval from Architectural Controls. WestView Builders retains the rights to alter plans, features and specifications without notice. Standard floor plan does not include basement development, deck or options in the base price. Room sizes are approximate.

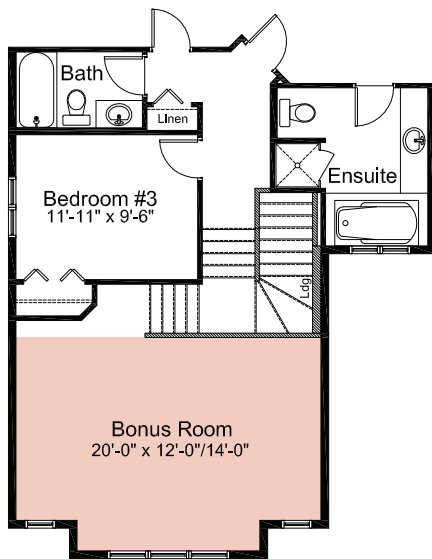
Pre-Planned Options



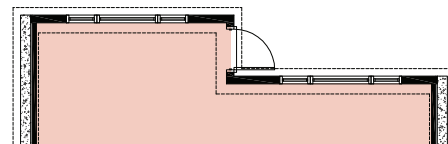
Nook Extension Option
(Adds 28 Sq.Ft. and Foundation)



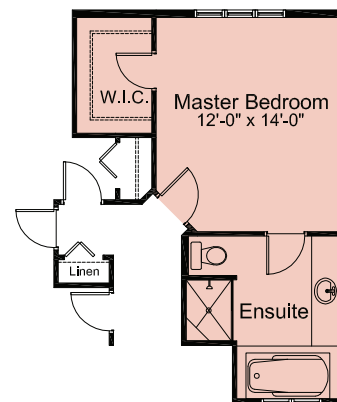
Basement Development Option = 577 Sq. Ft. of Developed Area



Bonus Room Extension Option (Adds 42 Sq.Ft.)



Walkout Basement Option.
Undeveloped, as lot grades will allow



Ensuite #1 Option

The illustration shown on this brochure is a rendering only and does not represent the final look of your home. Elevations are also subject to approval from Architectural Controls. WestView Builders retains the rights to alter plans, features and specifications without notice. Standard floor plan does not include basement development, deck or options in the base price. Room sizes are approximate.