

# FEATURES

- ☑ Craftsman elevation
- ☑ 9' ceiling on main floor includes transom windows
- ☑ Large Bonus room complete with vaulted ceiling
- ☑ 7 Pot lights in kitchen
- ☑ Walk-through pantry
- ☑ French Pantry door 1/2" Narrow Reed Glass
- ☑ Cantilevered Fireplace, includes WestView mantel
- ☑ Railing on stairwell to upper floor
- ☑ Main floor laundry room
- ☑ Tile included in bathrooms, laundry room and mudroom
- ☑ Hardwood included in kitchen, nook, foyer and hallway
- ☑ 5pc Ensuite includes 60" shower with pot light and 72" soaker tub and double vanity
- ☑ Includes finished garage: drywalled, insulated and fire taped
- ☑ Basement includes 3pc rough-in plumbing
- ☑ 1 high efficiency furnace (93%) zoned with programmable thermostat



(Craftsman Elevation)



THE  
**PRINCETON**  
2,135 SQ.FT.

## NOTES

---

---

---

---

---

---

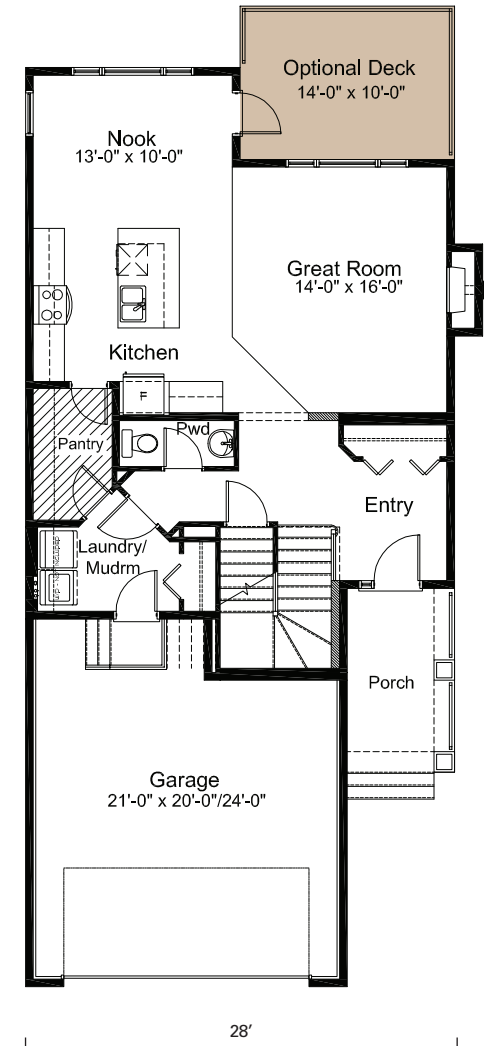
---

---

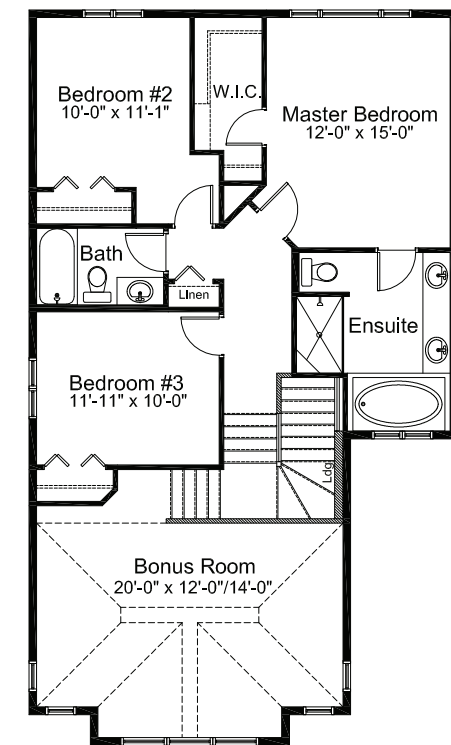
---

---

Main Floor  
947 sq.ft.



Upper Floor  
1,188 sq.ft.



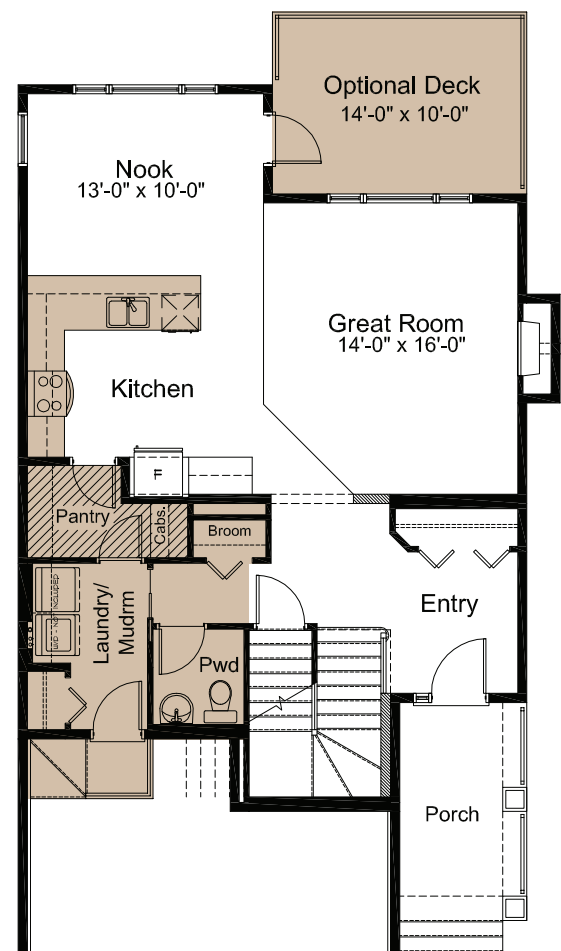
The illustration shown on this brochure is a rendering only and does not represent the final look of your home. Elevations are also subject to approval from Architectural Controls. WestView Builders retains the rights to alter plans, features and specifications without notice. Standard floor plan does not include basement development, deck or options in the base price. Room sizes are approximate.

The illustration shown on this brochure is a rendering only and does not represent the final look of your home. Elevations are also subject to approval from Architectural Controls. WestView Builders retains the rights to alter plans, features and specifications without notice. Standard floor plan does not include basement development, deck or options in the base price. Room sizes are approximate.

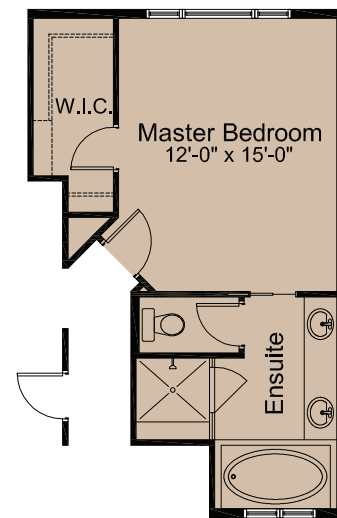
ELEVATION STYLE



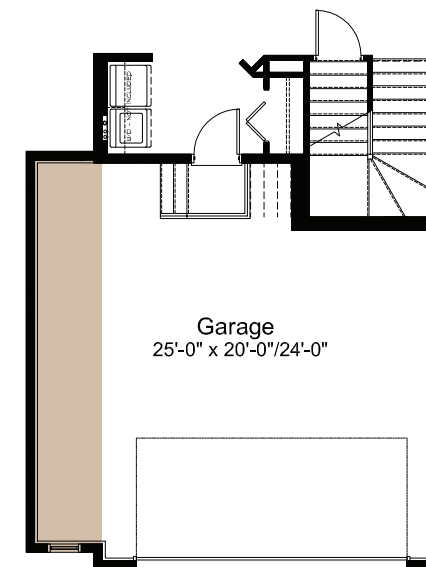
Craftsman  
Elevation



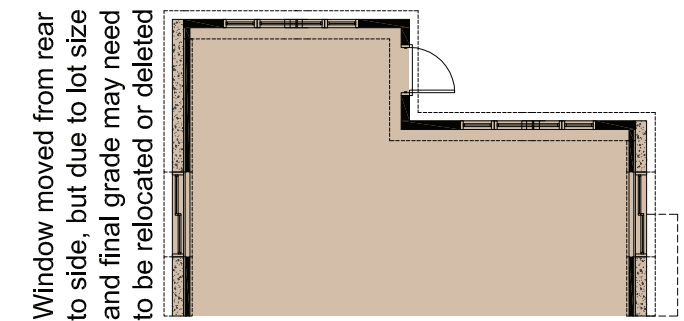
Kitchen Option  
(Modifies Laundry/Mudroom,  
Powder location and adds  
cabinets to Pantry)



Ensuite Option (Spa)

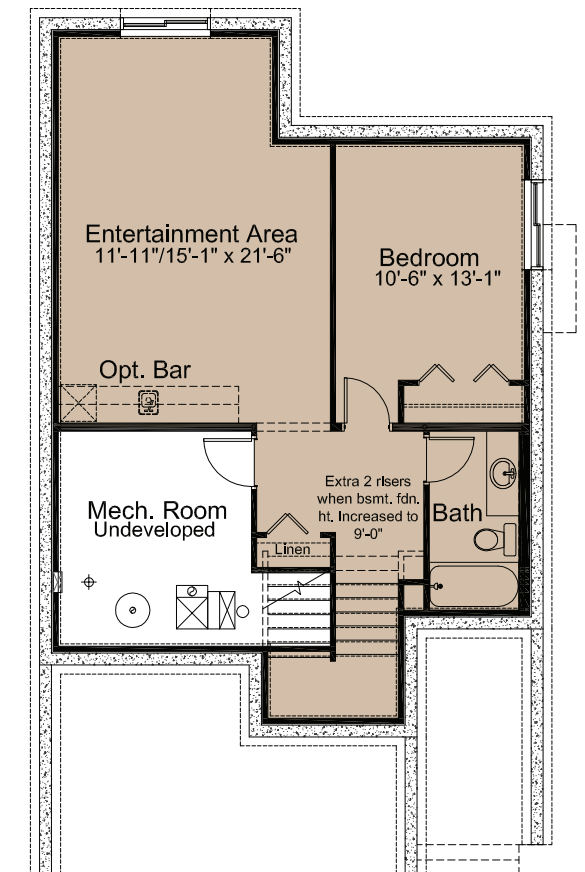


4' Garage Width Extension  
Option c/w Window



Window moved from rear  
to side, but due to lot size  
and final grade may need  
to be relocated or deleted

Walkout Basement Option.  
Undeveloped, as lot  
grades will allow



Basement Development  
Option = 656 Sq. Ft. of  
Developed Area