

# FEATURES

- ☑ Craftsman elevation standard, includes concrete verandah with 1 pot light in soffit. Cultured stone on Bedroom #2 and Bedroom #3.
- ☑ 9' ceiling on main floor Includes transom windows where applicable and 36" upper cabinets in kitchen
- ☑ Central Entertainment room overlooking Tech loft on Landing
- ☑ Pot lights in Kitchen
- ☑ Corner Pantry in Kitchen with french door
- ☑ Cantilevered Fireplace, includes WestView mantel c/w
- ☑ Railing on stairwell to upper floor
- ☑ Second floor laundry room
- ☑ Tile included in bathrooms, laundry room and mudroom
- ☑ Hardwood included in kitchen, nook, foyer and hallway
- ☑ 5pc Ensuite includes 4' shower with pot light, 72" soaker tub and double vanity
- ☑ Includes finished garage: drywalled, insulated and fire taped
- ☑ Basement includes 3pc rough-in plumbing
- ☑ 75 gallon electric hot water tank
- ☑ 2 high efficiency furnaces (93%) zoned with programmable thermostat



(Craftsman Elevation)



THE  
**VERNON**  
2,769 SQ.FT.

# NOTES

---

---

---

---

---

---

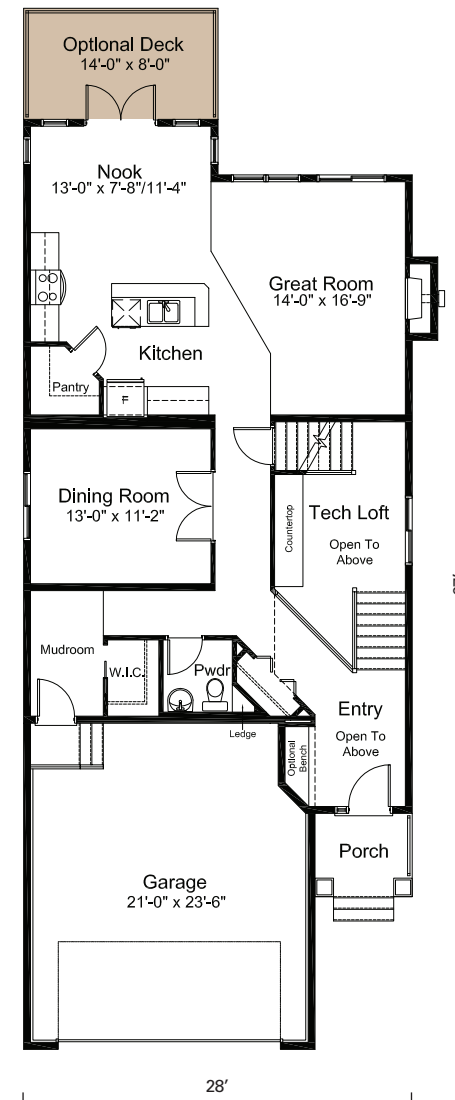
---

---

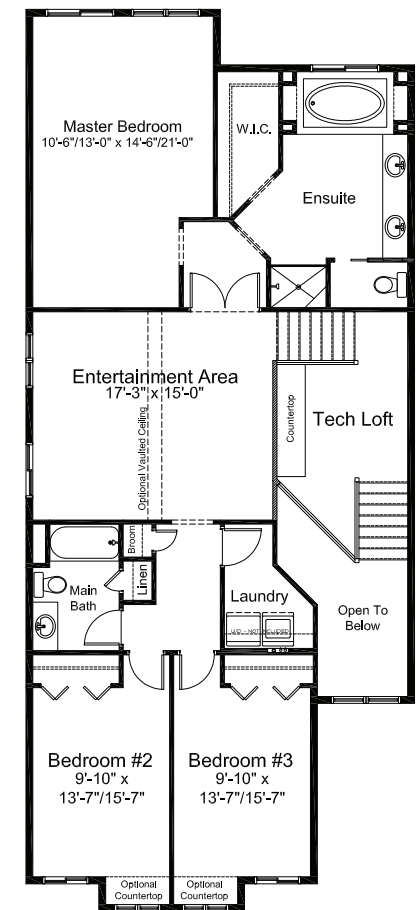
---

---

Main Floor  
1,223 sq.ft.



Upper Floor  
1,546 sq.ft.



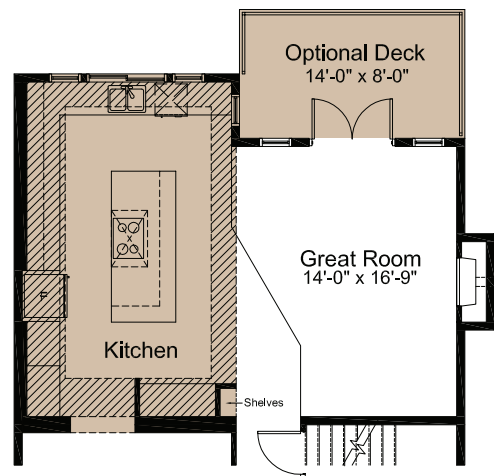
The illustration shown on this brochure is a rendering only and does not represent the final look of your home. Elevations are also subject to approval from Architectural Controls. WestView Builders retains the rights to alter plans, features and specifications without notice. Standard floor plan does not include basement development, deck or options in the base price. Room sizes are approximate.

The illustration shown on this brochure is a rendering only and does not represent the final look of your home. Elevations are also subject to approval from Architectural Controls. WestView Builders retains the rights to alter plans, features and specifications without notice. Standard floor plan does not include basement development, deck or options in the base price. Room sizes are approximate.

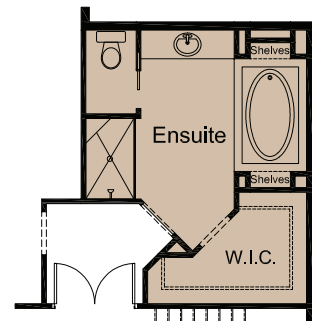
ELEVATION STYLE



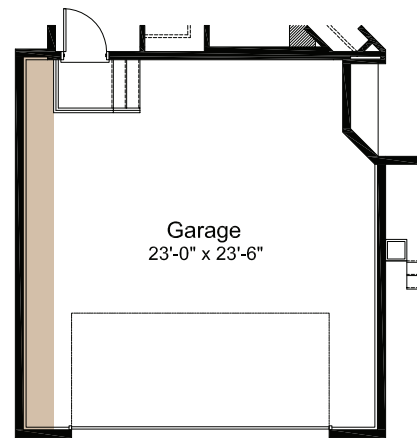
Craftsman  
Elevation



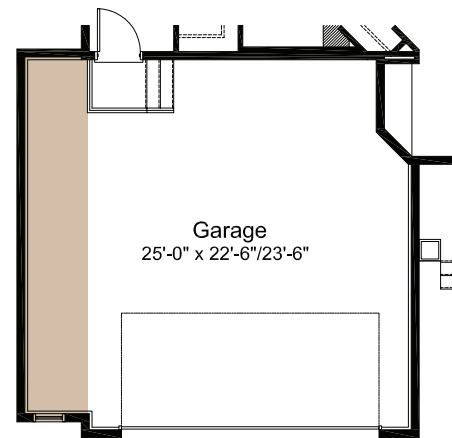
Gourmet Kitchen Option.  
Optional Deck location moved.



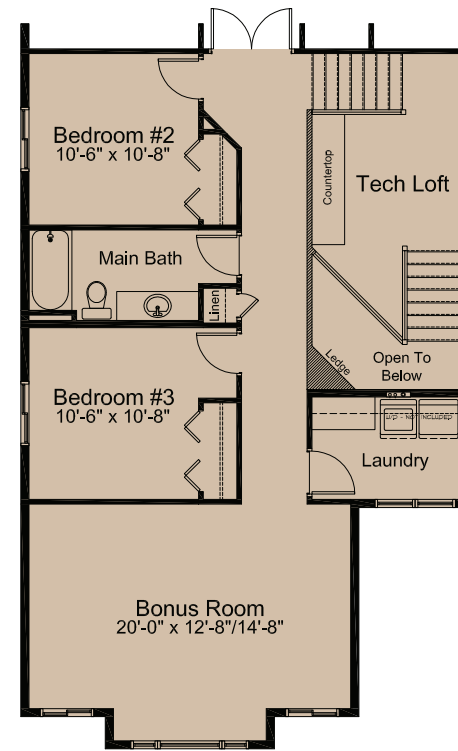
Ensuite Option



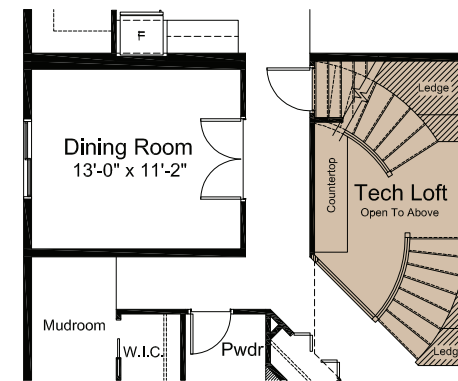
2' Garage Width Extension Option



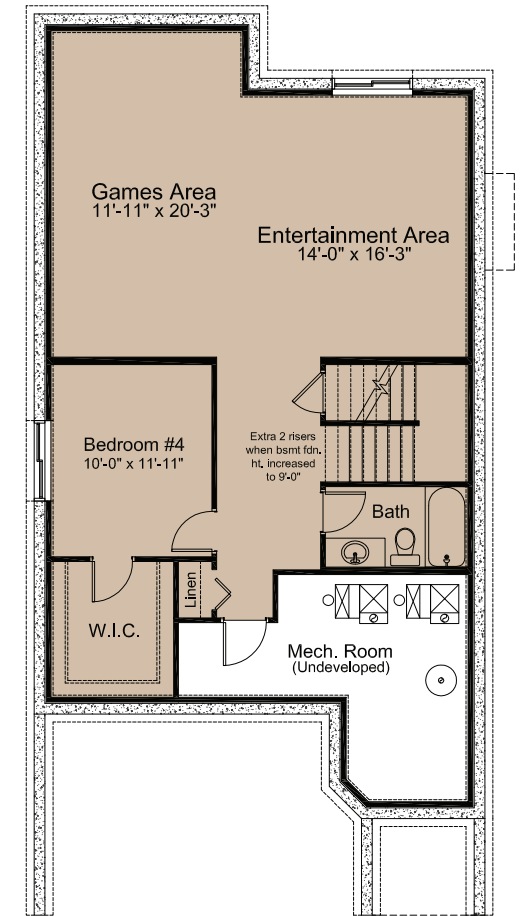
4' Garage Width Extension Option.  
Includes one window.



Revised Bedrooms & Bonus Room  
Option



Curved Stairs with Tech Loft Option



Basement Development  
878 Sq.Ft. of Developed Area

The illustration shown on this brochure is a rendering only and does not represent the final look of your home. Elevations are also subject to approval from Architectural Controls. WestView Builders retains the rights to alter plans, features and specifications without notice. Standard floor plan does not include basement development, deck or options in the base price. Room sizes are approximate.

The illustration shown on this brochure is a rendering only and does not represent the final look of your home. Elevations are also subject to approval from Architectural Controls. WestView Builders retains the rights to alter plans, features and specifications without notice. Standard floor plan does not include basement development, deck or options in the base price. Room sizes are approximate.