

# QUICK POSSESSION HOMES



## THE MANCHESTER

2,646 SQ.FT.



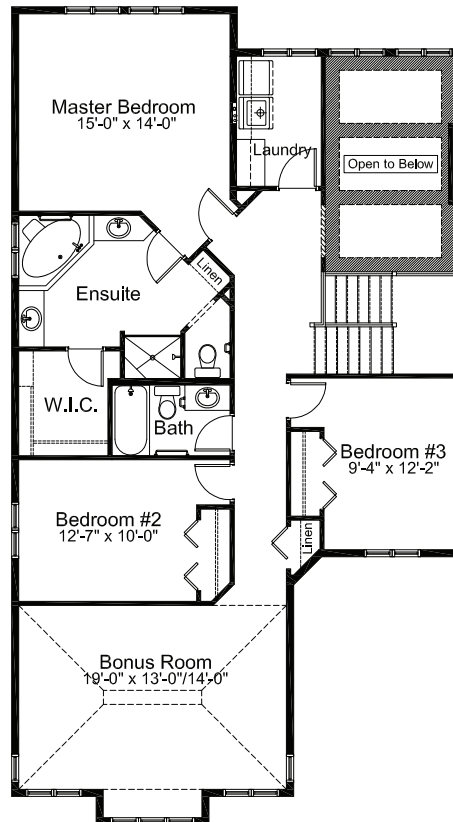
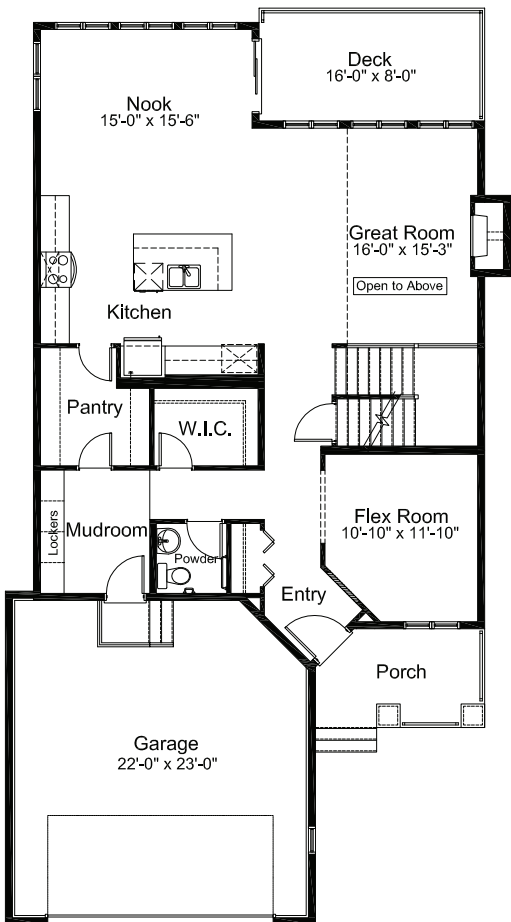
11 Evansborough View, Calgary

Lot 117 | Block 62

\$  
Incl. House Lot & GST

Main Floor  
1242 sq. ft.

Upper Floor  
1404 sq. ft.



### FEATURES

- Flex Room
- Custom built lockers in mud room
- Large walk through pantry
- Knockdown ceilings throughout
- Hardwood and tile on Main floor
- Stainless Steel appliances in the Kitchen
- Granite countertops in Kitchen
- Maple railing on stairs
- Open to above Great room
- Upstairs Laundry
- 5 piece Ensuite with W.I.C.
- Deck 16'x8' ft.



WestView Builders retains the rights to alter plans, features and specifications without notice. Specifications and features as described on brochure may vary slightly compared to the original house.

EvansRidge | P: (403) 452-5317 | F: (403) 452-5369 | E: evansridge@westviewbuilders.com

WESTVIEWBUILDERS.COM