

# Quick Possession Homes



THE  
**LEROUX**  
1,952 SQ.FT.

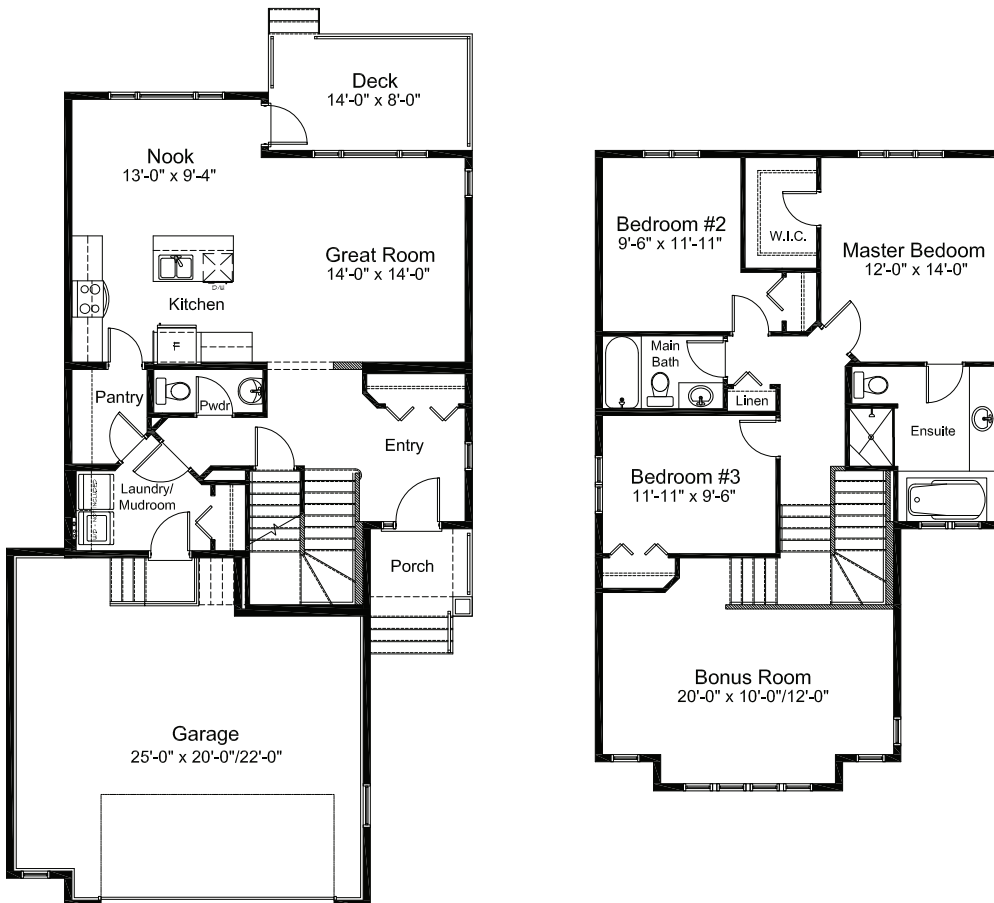
\$  
Incl. House Lot & GST

**Montrose**  
HIGH RIVER

102 Monteith Court SE, High River  
Lot 48 | Block 6

## FEATURES

- Quartz countertop in Kitchen
- Large walk-in-closet
- Walk-thru Pantry
- 2' ft. Garage Extension
- Knockdown Ceilings
- 14' ft. x 8' ft. Deck
- Large Bonus Room
- Stainless Steel Appliances



**RED DOOR**  
homes  
by WESTVIEW

Montrose | P: (403) 652-3699 | F: (403) 652-3638 | E: [montrose@westviewbuilders.com](mailto:montrose@westviewbuilders.com)

*surprisingly affordable*