

QUICK POSSESSION HOMES



THE MANCHESTER

2,600 SQ.FT.

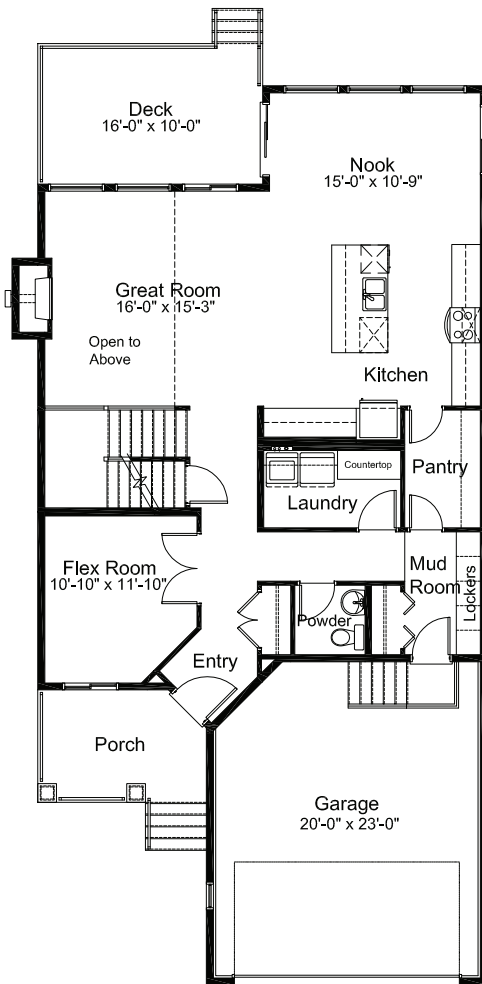


380 Tremblant Heights SW, Calgary

Lot 5 | Block 1

\$
Incl. House Lot & GST

Main Floor 1242 sq. ft.



Upper Floor 1400 sq. ft.



FEATURES

- Hardwood on main floor
- Tile in all bathrooms, laundry room, and mud room
- Custom lockers in mud room
- Open to above great room with tiled fireplace up to the ceiling
- Granite in the kitchen
- Full height Kitchen cabinets
- Quartz in Main and Master bathroom
- Custom shower, fully tiled comes with 10 mm glass
- 9' ft. ceilings on main floor and basement
- 3 piece rough-in for the future bathroom in basement
- 16'x10' deck included



WestView Builders retains the rights to alter plans, features and specifications without notice. Specifications and features as described on brochure may vary slightly compared to the original house.